



**CONSOLIDATED  
SHIPPING LINE**

LAND, SKY, SEA

Wish Your Freight  
Could Speak!

# COMPANY PROFILE



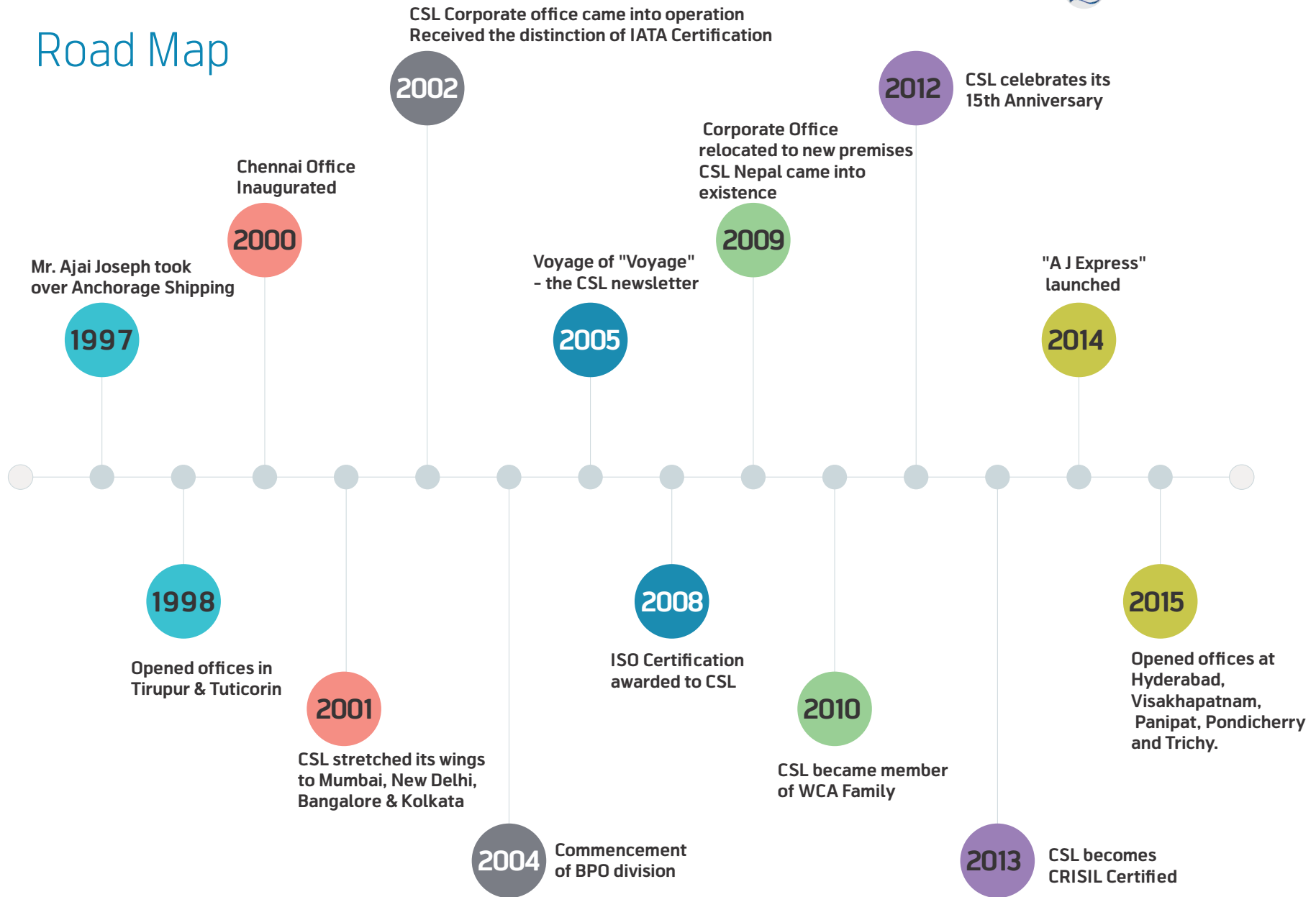
Founded in 1995, established its presence with 25 offices nationally and globally.

Undisputed leaders amongst the freight forwarding Companies in the country.

Our well established global network as well as services of professionals provide us a strong and secure base for all the logistical needs of our clients.

Member of WCA (World Cargo Alliance)

# Road Map







# Value Added Services



+ Online consignment tracking facility.

+ Offers tailor made solutions & implant at our client's premises if necessary.

+ Central accounting system enabling our partners and clients to reconcile accounts through one window.

+ Operates through a state-of-the-art shipping and logistics software that works on cloud server.



**BEHIND  
SUCCESS  
IS GREAT  
TEAM**

# Quality Certifications



ISO 9001:2008 certified company Certificate



Member of Custom House Agents



CRISIL Rating



Individual member of FIATA (International Federation of Freight Forwarders Associations)



Certificate of registration from IATA (International Air Transport Association)



FMC registered Bill of Lading



Member of WCA family



Associate Member of India Trade Promotion Organization



Allied Member of FFAI (Federation Of Freight Forwarders' Associations in India)





To offer practical, cost effective and innovative freight management solutions through our ambitious team that comprises of our staff, management and network partners.

To be recognized as a quality operator in the global logistics arena by offering total logistics solutions to meet our customer demands and work towards improving industry standards, customer satisfaction, stable growth & profitability.

# Our Values

## Integrity

We believe in conducting our business with the highest level of integrity during our interactions and dealings with our people, customers and business partners.

## Ownership

We support the sense of ownership and leadership in our people by encouraging them to be responsible and accountable through decision making and creativity processes without compromising on our values.

## TEAM SPIRIT

We strive to create and sustain a conducive working environment for our staff and across the board through listening, debating, helping, sharing and participating as a team.

## ATTITUDE

We value enthusiasm, warmth and positive attitude which are essential components in a service trade where customer satisfaction has the prime role.

## LEADERSHIP

We strongly believe that the strength of our company is in the quality of our people, as such, our management style is effective leadership practiced by example.

## PARTNERSHIP

We start a relationship with our customers, suppliers and our people based on winning a long term partnership and we put sincere efforts to maintain the enduring relationship.





# Key Clientele

**DAFFCO**



**HCL**  
HCL INFOSYSTEMS LTD.



**EUREKA FORBES**  
Your friend for life



**REDINGTON**



**asianpaints**

**HITACHI**  
Inspire the Next

**FLEXTRONICS**



# Key Clientele



J.J. Kothari & Co. Ltd.

# Customer Service



- + Free consultancy and survey for all shipping needs.
- + Facilitation for understanding international freighting norms.
- + Booking, rate requests, sailing schedule & industry news on website.
- + Provision of Product and Service expertise relevant to your business.
- + Quick and courteous multilingual staff handling every customer under the same benchmark and commitment.



# Warehouse Management

CSL management has immense experience in setting up and handling 3PL logistics and CFS in the Middle East and India.

The services that we provide includes Warehouse Management System and modern material handling equipment to cargo specific solutions and adding value to customer supply chain.





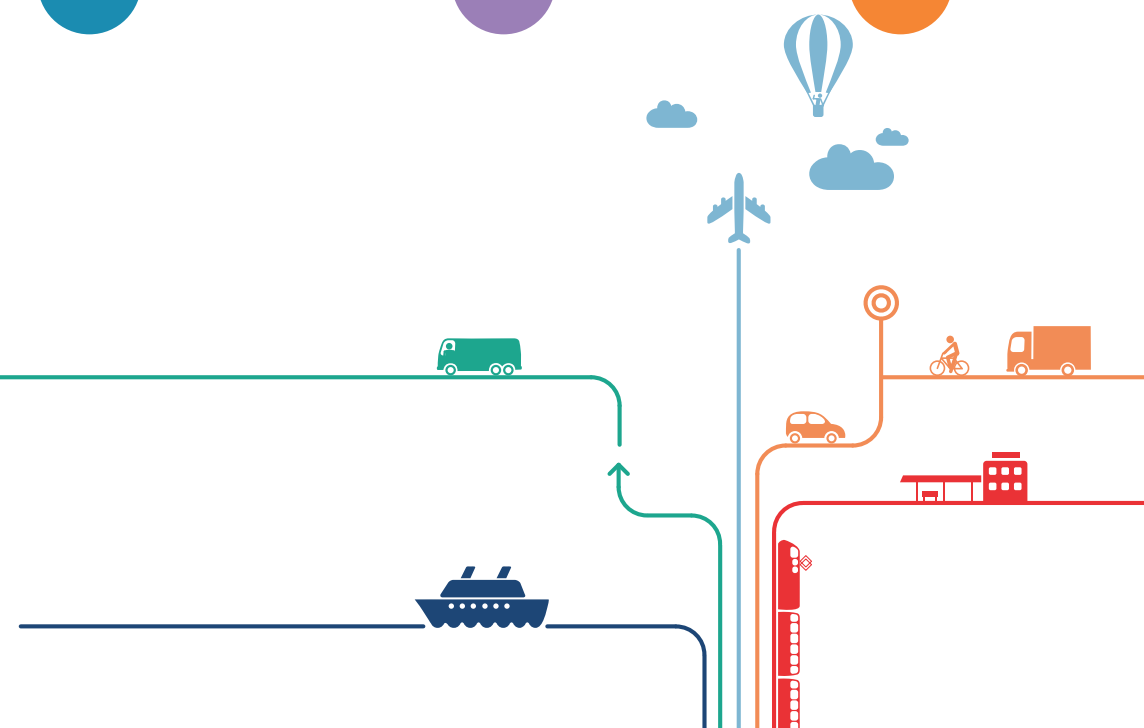
# OUR NETWORK



# CSL OFFICES ACROSS INDIA



# THE DIFFERENTIATOR





# Liner Agency

CSL has been appointed as exclusive agents in South of India by Indus Container Lines (P) Ltd, to operate Europe, Mediterranean and Middle-East destinations.





# AJ EXPRESS

"A J Express" launched as the courier brand of Anchorage Shipping, with the sole intention to cater the ever demanding air express cargo courier operations in India.

Anchorage Shipping offers Air cargo courier, Interstate surface transport, International air and ocean freight services, warehousing and distribution along with it's own Customs broking, ensuring peace of mind and convenience of a single window concept to its customers

Today we have been acknowledged and awarded many contracts by corporates and multinationals across the globe which is a true testimony to our service commitment. We will continue to take pride in our logistics activities that help us offer the best in the trade and to be recognized as a quality operator!



A customised effective high quality service with a single window solution to these brands



Yota

***lenovo***



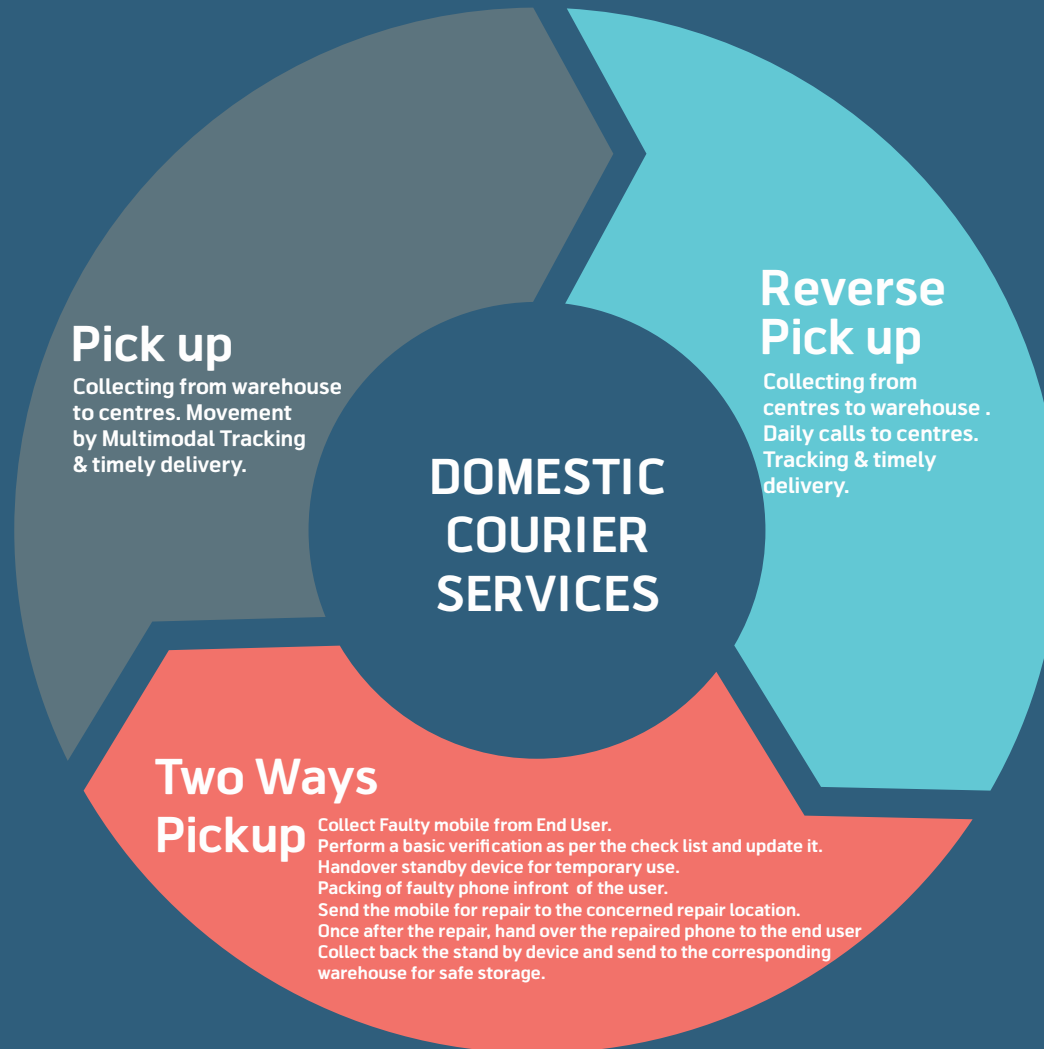
**MOTOROLA**

**BlackBerry™**









# VALUE ADDITIONS FOR DOMESTIC COURIER

Have an in-house courier called AJ Express, exclusively for valuable and electronic items movements and timely services.

Out source and manage other courier companies, depending on their strongest area/zones to get the best performance from them.

Multilingual staff for a better coordination across all service centres & with our courier picks up agents.

Our team is continuously in touch with the pick up and delivery staffs so that the shipments are handled with upmost care.

Our team is continuously in touch with the pick up and delivery staffs so that the shipments are handled with upmost care.

Personal follow with insurance company and updation on missing case.

Send daily reports to the customer

Send monthly TAT performance reports to the customers.

Easily approachable.

One point of contact at each level.

# COMPETITORS

1. All have cargo and courier mode of operations.
2. Infrastructure set up at all major & metro locations ,  
e.g. Bangalore, Delhi Pune, Mumbai, Hyderabad, Pune, Cochin...
3. Similar TAT for all major & metro locations.
4. Direct AWB's with airlines with confirm space.
5. Warehousing at all metro locations.

1. Freights are competitive.
2. Direct contact for customers instead of Toll-free. Exclusive customer service and key contact for all accounts.
3. Personal follow up and reports to customer on daily basis
4. Services to Tier 3/4 and ODA (outside delivery area)
5. Open delivery done in case damage box received.
6. Hard POD's available on request with CSL.

Comparative study  
with competitors

Key differences with  
our competitors



# How does CSL handles Regional specific statutory/ Way Bills / Entry tax/ Octroi/ Road Permit issues

A

All the statutory documents has to be submitted along with the shipment by consignor.

Octroi can be paid by CSL and should be released within 7 days time.

B

In case customer does not have statutory documents, shipments can be moved through postal services (GPO) where only DC is required for movement.

C





A glimpse of our  
prestigious  
projects

## A glimpse of our prestigious projects

CSL handled imports from BMW outlets in Europe on an ex-factory arrangement for OSL Prestige BMW Service Centres at West Bengal, Assam and Orissa.

CSL had provided service to Porsche in setting up their showroom in Cochin



PORSCHE



## A glimpse of our prestigious projects

Executed door to door total logistics solutions for Airport Authority of India expansion projects at Chennai, Trivandrum, Ahmedabad, Jaipur, Jodhpur, Mumbai, Nagpur, Amritsar and Mangalore.

Commodity – Baggage Conveyor system for arrival & departure counters.



## AAI EXPANSION PROGRAMME



CSL Charters vessel

### CSL Charters vessel for DAFFCO

Vessel loaded from Guyana, West Indies to Tuticorin, India with 10000 MT Cargo.



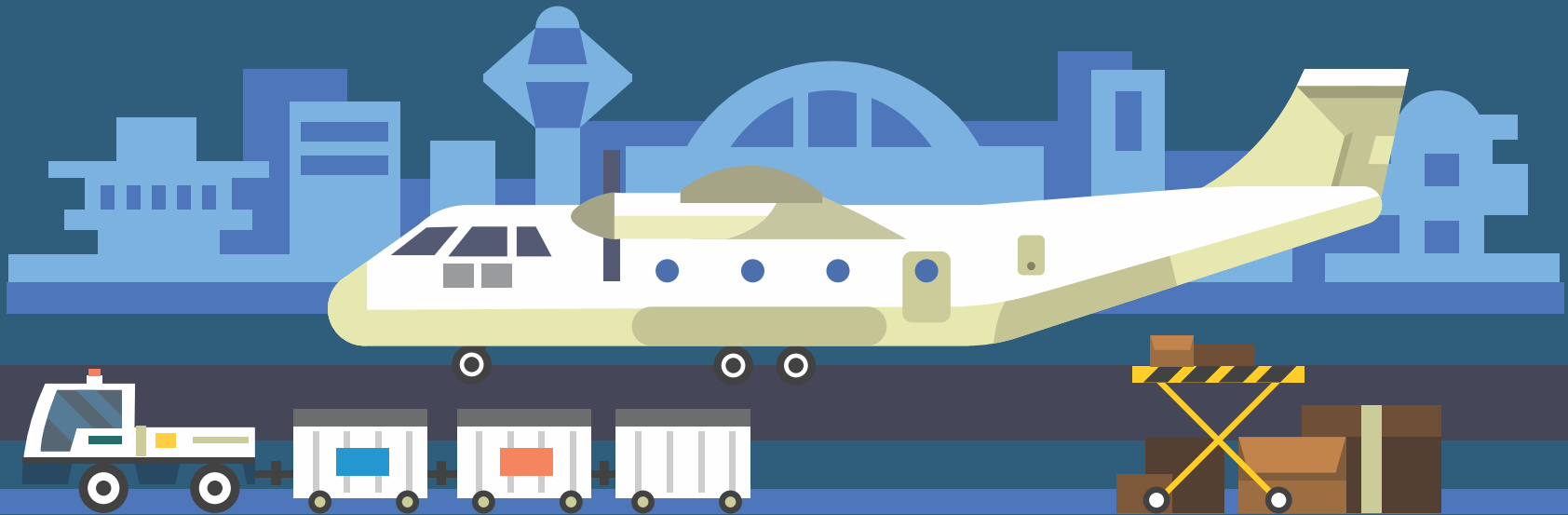


A glimpse of our prestigious projects

# CSL Charters Turkish Airlines for Bommidala Enterprises



**Commodity : Cigarettes**  
**Volume : 92 tonnes**



## A glimpse of our prestigious projects Sri Lankan Railway Project (2011)



Import of E-Houses from USA to India

Break Bulk Arrived from Japan





## A glimpse of our prestigious projects

Handled shipment of Gas Fired Chiller to Hamburg



Handled TEBMA SHIPYARD Project







THANK YOU